

A DELEAFING CANNABIS ROBOT

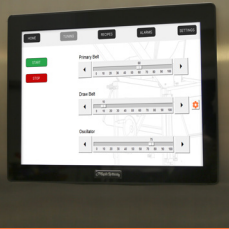
softrim™

better than hand trim



WHY SILICONE?

- Increased flower yield for increased profit
- Natural flower formations are intact
- Preserve trichomes to reserve THC levels and aromas



ROBOTIC SERVO CONTROLS

- On-the-fly micro adjustments
- Store your settings
- 4-way process parameters

| | |
|-----------------------|---|
| Dimensions | 13'x4.6'x7.9' |
| Utilities | 120V 20 amps |
| Weight | 2,200 pounds |
| Dry flower output | 20 SECONDS/POUND |
| Noise level | Normal conversation can be had |
| Placement of Softrim | In the barn |
| Materials | Silcon, 304 stainless, delrin |
| Safety sensors | Front door, right service door, left service door |
| Motors | Servo, direct, linear |
| Power cable | 20 foot |
| Warranty | 1 year |
| Design engineering | 10 year lifespan |
| Silicone finger belts | Lifespan approx 4K to 5K pounds |

We believe post-harvest processing is a manufacturing engineering task

The trimming process has a direct correlation between grown flower yield and profit

Softrim OUTDOOR Machine

SINGLE PIECE FLOW MANUFACTURING

Buck flower directly into the Softrim machine in the dry room

