

A DELEAFING CANNABIS ROBOT

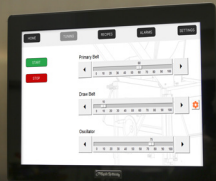
softrim™

better than hand trim



WHY SILICONE?

- Increased flower yield for increased profit
- Natural flower formations are intact
- Preserve trichomes to reserve THC levels and aromas



ROBOTIC SERVO CONTROLS

- On-the-fly micro adjustments
- Store your settings
- 4-way process parameters

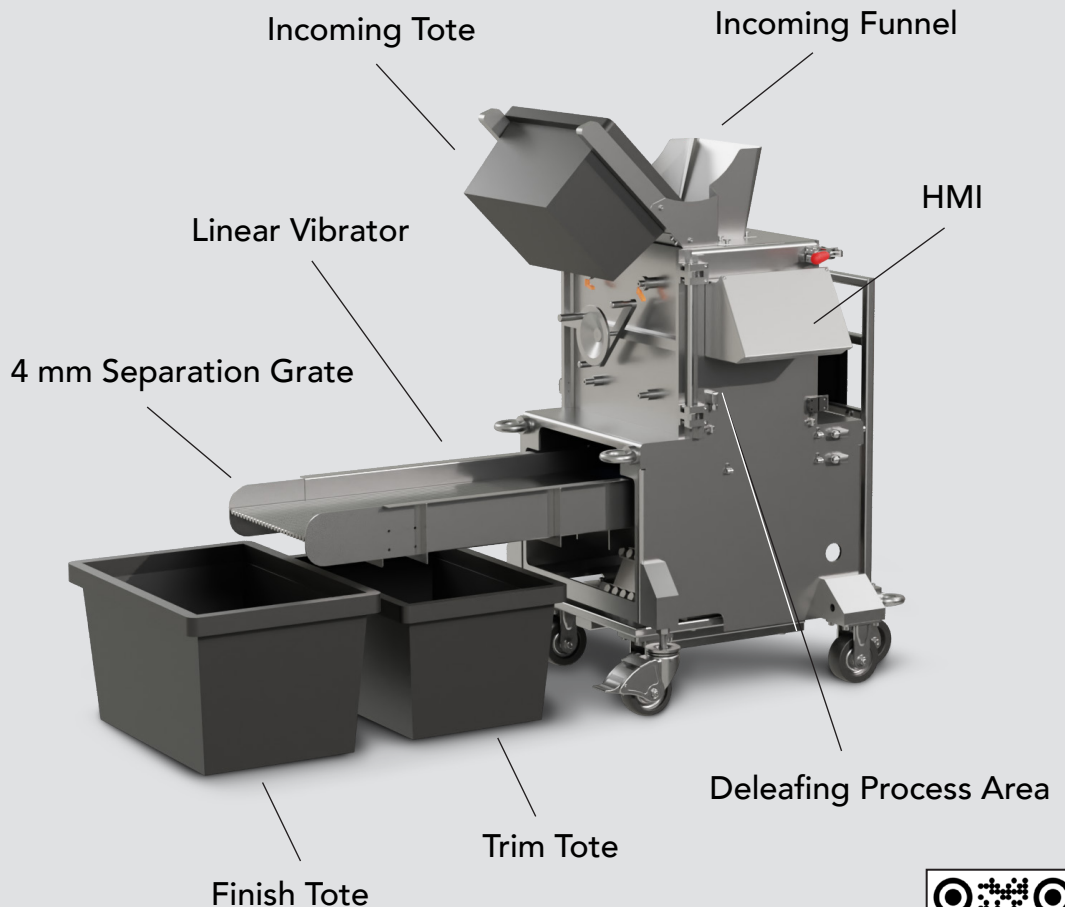
Dimensions	63"x31"x54"
Utilities	120V 20 amps
Weight	800 pounds
Dry flower output	20 SECONDS/POUND
Noise level	Normal conversation can be had
Manufacture method	Single piece flow
Placement of Softrim	In the dry room
Materials	Silicone, 304 stainless, hardened aluminum, delrin
Safety sensors	Front door, back door, e-stop
Motors	Servo, direct, linear
Power cable	20 foot
Warranty	1 year
Design engineering	10 year lifespan
Silicone finger belts	Lifespan approx 3,000 pounds

We believe post-harvest processing is a manufacturing engineering task

The trimming process has a direct correlation between grown flower yield and profit

Softrim INDOOR Machine

SINGLE PIECE FLOW MANUFACTURING
Buck flower directly into the Softrim machine in the dry room



A product of PLATFORMROBOTICS

softrimusa.com

